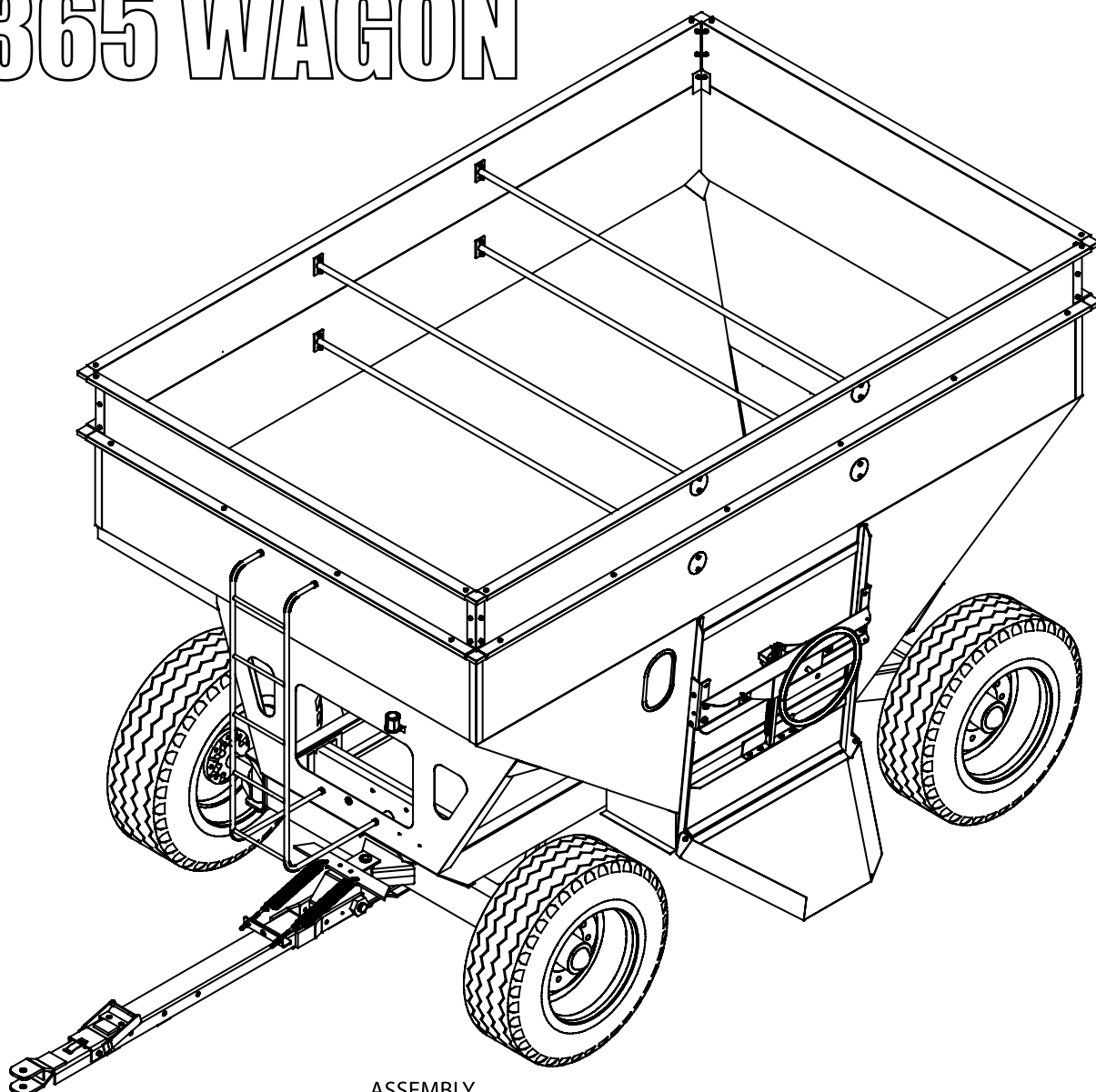




Demco

Gravity Flow 365 WAGON



ASSEMBLY
CALIBRATION
OPERATION
REPLACEMENT PARTS

READ *complete manual CAREFULLY
BEFORE attempting operation.*

Doing Our Best to Provide You the Best

OPERATORS MANUAL

INTRODUCTION

Thank you for purchasing a Demco Gravity Flow Wagon. We feel you have made a wise choice and hope you are completely satisfied with your new piece of equipment. Proper care and use will result in many years of service.

Note: This is one of a two manual set. The other manual is titled “Safety Manual” and contains all safety issues that have to do with grain handling equipment that Demco manufactures. Be sure to review both manuals before operation.

GENERAL INFORMATION

1. Unless otherwise specified, high-strength (grade5) (3 radial-line head markings) hex head bolts are used throughout assembly of this piece of equipment.
2. Whenever terms “**LEFT**” and “**RIGHT**” are used in this manual it means from a position behind wagon box and facing forward.
3. When placing a parts order, refer to this manual for proper part numbers and place order by **PART NO. and DESCRIPTION.**
4. Read assembly instructions carefully. Study assembly procedures and all illustrations before you begin assembly. Note which parts are used in each step. This unit must be assembled in proper sequence or complications will result.

Table of Contents

General Information & Table of Contents	3
Safety, Signal Words	4
Equipment Safety Guidelines, Lighting and Marking	5
Safety Sign Care	5
Tire Safety	6
Before Operation	6
During Operation.....	6-7
Following Operation	7
Highway and Transport Operations	7-8
Performing Maintenance	8
Safety Sign Locations	9
Bolt Torque	10
Warranty Registration.....	11-12
Running Gear Parts List and Breakdown	13
Gravity Flow Box Parts Breakdown.....	14
Gravity Flow Box Parts List and Assembly Instructions	15
365 Bushel Box with 12 Ton HD Rocking Bolster.....	16
Gravity Flow Box Light Kit with Parts List and Instructions	17
Window Installation Procedure and Parts List	18

SAFETY

TAKE NOTE! THIS SAFETY ALERT SYMBOL FOUND THROUGHOUT THIS MANUAL IS USED TO CALL YOUR ATTENTION TO INSTRUCTIONS INVOLVING YOUR PERSONAL SAFETY AND SAFETY OF OTHERS. FAILURE TO FOLLOW THESE INSTRUCTIONS CAN RESULT IN INJURY OR DEATH!



THIS SYMBOL MEANS

ATTENTION

BECOME ALERT

YOUR SAFETY IS INVOLVED!

SIGNAL WORDS:

This manual uses of the following signal words--**DANGER**, **WARNING**, and **CAUTION**-- with safety messages. The appropriate signal word has been selected using the following guidelines.

DANGER:

Indicates an imminently hazardous situation that, if not avoided, will result in death or serious injury. This signal word is to be limited to most extreme situations typically for machine components which, for functional purposes, cannot be guarded.

WARNING:

Indicates a potentially hazardous situation that, if not avoided, could result in death or serious injury, and includes hazards that are exposed when guards are removed. It may also be used to alert against unsafe practices.

CAUTION:

Indicates a potentially hazardous situation that, if not avoided, may result in minor or moderate injury. It may also be used to alert against unsafe practices.

If you have questions not answered in this manual, require additional copies, or if your manual is damaged, please contact your dealer or Demco, P.O. Box 189, 4010 320th Street, Boyden, IA 51234
ph: (712) 725-2311 or Toll Free: 1-800-543-3626 Fax: (712) 725-2380
<http://www.demco-products.com>



SAFETY...YOU CAN LIVE WITH IT



EQUIPMENT SAFETY GUIDELINES

Every year many accidents occur which could have been avoided by a few seconds of thought and a more careful approach to handling equipment. You, the operator, can avoid many accidents by observing the following precautions in this section. To avoid personal injury, study the following precautions and insist those working with you, or you yourself, follow them.

In order to provide a better view, certain illustrations in your owners manual may show an assembly with a safety shield removed. However, equipment should never be operated in this condition. Keep all shields in place. If shield removal becomes necessary for repairs, replace shield prior to use.

Replace any caution, warning, danger or instruction safety decal that is not readable or is missing.

Do not attempt to operate this equipment under the influence of alcohol or drugs.

Review safety instructions with all users annually.

Operator should be a responsible adult. **DO NOT ALLOW PERSONS TO OPERATE OR ASSEMBLE THIS UNIT UNTIL THEY HAVE DEVELOPED A THOROUGH UNDERSTANDING OF SAFETY PRECAUTIONS AND HOW IT WORKS.**

To prevent injury or death, use a tractor equipped with a roll over protective system (ROPS). Do not paint over, remove, or deface any safety signs or warning decals on your equipment. Observe all safety signs and practice instructions on them.

Never exceed limits of a piece of machinery. If its ability to do a job, or to do so safely is in question **DON'T TRY IT.**



LIGHTING AND MARKING

It is the responsibility of customer to know lighting and marking requirements of local highway authorities and to install and maintain equipment to provide compliance with regulations. Add extra lights when transporting at night or during periods of limited visibility.

Lighting kits are available from your dealer or from manufacturer.



REMEMBER

Your best assurance against accidents is a careful and responsible operator. If there is any portion of this manual or function you do not understand, contact your local authorized dealer or manufacturer.



SAFETY SIGN CARE

- Keep safety signs clean and legible at all times.
- Replace safety signs that are missing or have become illegible.
- Replacement parts that displayed a safety sign should also display current sign.
- Safety signs are available from your distributor, dealer parts department, or factory.

How to install safety signs:

- Be sure that installation area is clean and dry.
- Decide on exact position before you remove backing paper.
- Remove smallest portion of split backing paper.
- Align decal over specified area and carefully press small portion with exposed sticky backing in place.
- Slowly peel back remaining paper and carefully smooth remaining portion of decal into place.
- Small air pockets can be pierced with a pin and smoothed out using piece of decal backing paper.



TIRE SAFETY

- Failure to follow proper procedures when mounting a tire on a rim can produce an explosion which may result in a serious injury or death.
- Do not attempt to mount a tire unless you have proper equipment and experience to do job.
- Inflating or servicing tires can be dangerous. Whenever possible, trained personnel should be called to service and/or mount tires.
- Always order and install tires and wheels with appropriate type and load capacity to meet or exceed anticipated weight to be placed on the equipment.
- Refer to “**TIRE INFLATION CHART**” in your owners manual for maximum tire pressure for a Demco Grain Cart.



BEFORE OPERATION:

- Carefully study and understand this manual and the Owner's Manual.
- Do not wear loose-fitting clothing which may catch in moving parts.
- Always wear protective clothing and substantial shoes.
- It is recommended that suitable protective hearing and eye protection be worn.
- Operator may come in contact with certain materials which may require specific safety equipment relative to handling of such materials. (Examples: extremely dusty, molds, fungus, bulk fertilizers, etc.)
- Keep wheel and lug nuts tightened to specified torque.
- Assure that agricultural implement tires are inflated evenly.
- Give unit a visual inspection for any loose bolts, worn parts, or cracked welds, and make necessary repairs. Follow maintenance safety instructions included in this manual.
- Be sure there are no tools lying on or in equipment
- Do not use unit until you are sure that area is clear, especially around children and animals.
- Don't hurry learning process or take unit for granted. Ease into it and become familiar with your new equipment.
- Practice operation of your equipment and its attachments. Completely familiarize yourself and other operators with its operation before using.
- Make sure that brakes are evenly adjusted (if equipped with brakes)
- Use a tractor equipped with Roll Over Protection System (ROPS) and fasten your seat belt prior to starting the engine.
- Manufacturer does not recommend usage of a tractor with the ROPS removed.
- Move tractor wheels to widest recommended settings to increase stability.
- Do not allow anyone to stand between tongue or hitch and towing vehicle when backing up to equipment.



DURING OPERATION

- Beware of bystanders, **PARTICULARLY CHILDREN!** Always look around to make sure that it is safe to start engine of towing vehicle or move unit. This is particularly important with higher noise levels and quiet cabs, as you may not hear people shouting.
- **NO PASSENGERS ALLOWED-** Do not carry passengers anywhere on or in tractor or equipment.
- Keep hands and clothing clear of moving parts.
- Do not clean, lubricate, or adjust your equipment while it is moving.

- When halting operation, even periodically, set tractor or towing vehicles brakes, disengage PTO, shut off engine, and **remove ignition key**.
- Be especially observant of operating area and terrain. Watch for holes, rocks, or other hidden hazards. Always inspect area prior to operation.
 - DO NOT operate near edge of drop-off or banks.
 - DO NOT operate on steep slopes as overturn may result.
 - Operate up and down (not across) intermediate slopes. Avoid sudden starts and stops.
- Pick the most level possible route when transporting across fields. Avoid edges of ditches, gullies, and steep hillsides.
- Be extra careful when working on inclines.
- Maneuver tractor or towing vehicle at safe speeds.
- Avoid overhead wires or other obstacles. Contact with overhead lines could cause serious injury or death.
- Avoid loose gravel, rocks, and holes; they can be dangerous for equipment operation or movement.
- Allow for unit length when making turns.
- Do not walk or work under raised components or attachments unless securely positioned and blocked.
- Keep all bystanders, pets, and livestock clear of work area.
- Operate towing vehicle from operators seat only.
- Never stand alongside of unit with engine running or attempt to start engine and/or operate machine while standing alongside of unit.
- Never leave running equipment unattended.
- As a precaution, always recheck hardware on equipment following every 100 hours of operation. Correct all problems. Follow maintenance safety procedures.



FOLLOWING OPERATION

- Following operation, or when unhitching, stop tractor or towing vehicle, set brakes, shut off engine and **remove ignition key**.
- Store unit in an area away from human activity.
- Do not park equipment where it will be exposed to livestock for long periods of time. Damage and livestock injury could result.
- Do not permit children to play on or around stored unit.
- Make sure all parked machines are on a hard, level surface and engage all safety devices.
- Wheel chocks may be needed to prevent unit from rolling.



HIGHWAY AND TRANSPORT OPERATIONS

- **SAFETY CHAINS:** If equipment is going to be transported on a public highway, always follow state and local regulations regarding safety chains and auxiliary lighting. Be sure to check with local law enforcement agencies for your own particular regulations. Only safety chains (not elastic or nylon/plastic tow straps) should be used to retain connection between towing and towed machines in event of separation of primary attaching system. Use a high strength, appropriately sized hitch pin with a mechanical retainer and attach safety chains. Criss cross chains under tongue and secure to draw bar cage, mounting loops, or bumper frame.
- Adopt safe driving practices:
 - Keep brake pedals latched together at all times. **NEVER USE INDEPENDENT BRAKING WITH MACHINE IN TOW, LOSS OF CONTROL AND/OR UPSET OF UNIT CAN RESULT.**
 - Always drive at a safe speed relative to local conditions, ensure that your speed is low enough for an emergency stop. Keep speed to a minimum.

- Reduce speed prior to turns to avoid risk of overturning.
- Always keep tractor or towing vehicle in gear to provide engine braking when going downhill. Do not coast.
- Do not drink and drive!
- Comply with state and local laws governing highway safety and movement of farm machinery on public roads.
- Use approved accessory lighting, flags and necessary warning devices to protect operators of other vehicles on highway during transport. Various safety lights and devices are available from your dealer.
- Use of flashing amber lights is acceptable in most localities. However, some localities prohibit their use. Local laws should be checked for all highway lighting and marking requirements.
- When driving tractor and equipment on road under 20 m.p.h. (40 kph) at night or during day, use flashing amber warning lights and a slow moving vehicle (SMV) identification emblem.
- Plan your route to avoid heavy traffic.
- Be a safe and courteous driver. Always yield to oncoming traffic in all situations, including narrow bridges, intersections, etc.
- Be observant of bridge load ratings. Do not cross bridges rated lower than gross weight at which you are operating.
- Watch for obstructions overhead and side to side while transporting.
- Always operate equipment in a position to provide maximum visibility. Make allowances for increased length and weight of equipment when making turns, stopping unit, etc.



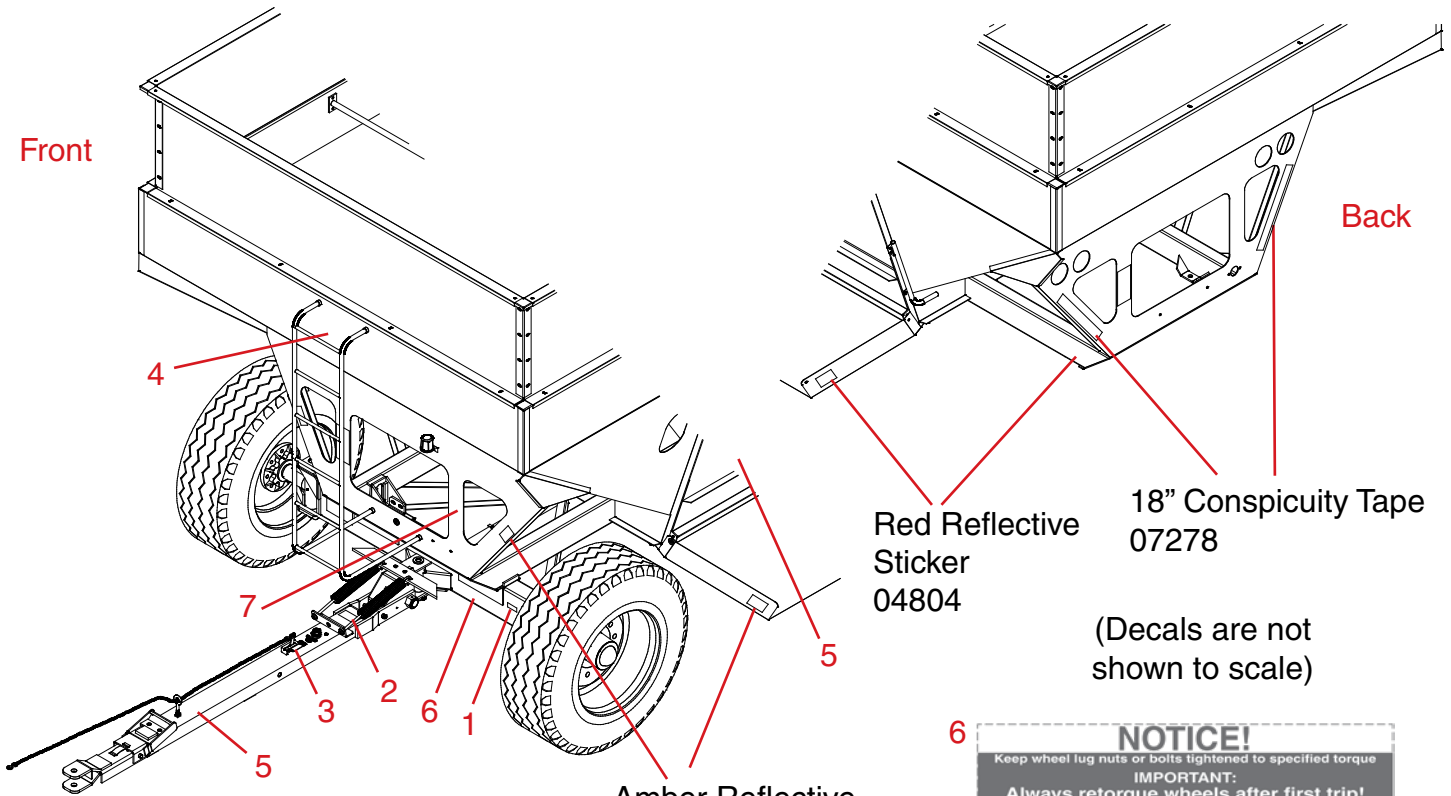
PERFORMING MAINTENANCE

- Good maintenance is your responsibility. Poor maintenance is an invitation to trouble.
- Make sure there is plenty of ventilation. Never operate engine of towing vehicle in a closed building. Exhaust fumes may cause asphyxiation.
- Before working on this machine, stop towing vehicle, set brakes, shut off engine and **remove ignition key**.
- Always use safety support and block wheels. Never use a jack to support machine.
- Always use proper tools or equipment for job at hand.
- Use extreme caution when making adjustments.
- Follow torque chart in owners manual when tightening bolts and nuts.
- Never use your hands to locate a hydraulic leak on attachments. Use a small piece of cardboard or wood. Hydraulic fluid escaping under pressure can penetrate skin.
- Openings in skin and minor cuts are susceptible to infection from hydraulic fluid.
Without immediate medical treatment, serious infection and reactions can occur.
- When disconnecting hydraulic lines, shut off hydraulic supply and relieve all hydraulic pressure.
- Replace **all shields** and **guards** after servicing and before moving.
- After servicing, be sure all tools, parts and service equipment are removed.
- Do not allow grease or oil to build up on any steps or platform.
- When replacing bolts, refer to owners manual.
- Refer to bolt torque chart in owners manual for head identification marking.
- Where replacement parts are necessary for periodic maintenance and servicing, genuine factory replacement parts must be used to restore your equipment to original specifications. Manufacturer will not claim responsibility for use of unapproved parts or accessories and other damages as a result of their use.
- If equipment has been altered in any way from original design, manufacturer does not accept any liability for injury or warranty.
- A fire extinguisher and first aid kit should be kept readily accessible while performing maintenance on this equipment



SAFETY SIGN LOCATIONS

Types of safety sign and locations on equipment are shown in illustration below. Good safety requires that you familiarize yourself with various safety signs, type of warning, and area or particular function related to that area, that requires your SAFETY AWARENESS.



1

CAUTION!
Do not exceed 20 MPH when loaded.
09/99 AG21002
AG21002

4

WARNING
Improper use may cause serious injury or death!
Keep off ladder while equipment is being moved or in operation.
REV 1 AG21067
AG21067

6

NOTICE!
Keep wheel lug nuts or bolts tightened to specified torque
IMPORTANT:
Always retorque wheels after first trip!
Tire Pressure for all 365/450/550/650 Bushel Gravity Flow Wagons 60 psi.
Nut or Bolt Torques
365bu. 5/8"-18UNF Grade 5 Torque to 150 ft. lbs.
450/550bu. 5/8"-18UNF Grade 8 Torque to 225 ft. lbs.
650bu. 3/4"-16UNF Grade 8 Torque to 400 ft. lbs.
CAUTION:
Over inflation may result in damage to running gear and box integrity.
Check tire pressure regularly.
REV 1 AG21001
AG21001

AG21001

2

ATTENTION
Short turns will result in equipment damage.
06/99 AG21070
AG21070

AG21070

3

BRAKES ON DO NOT TOW **BRAKES OFF TOWABLE**
BH21003

BH21003

5

CAUTION
CHECK ALL LUG NUTS
DEALER OR MANUFACTURER ARE NOT RESPONSIBLE FOR DAMAGE CAUSED BY LOOSE LUG NUTS.
REV 1 AG21127
AG21127

AG21127

7

DANGER
To prevent serious injury or death by suffocation!
• Never play in or on the grain.
• Flowing grain traps and suffocates victim in seconds!
Farm Safety
Just Kids
REV 1 AG21006
AG21006

AG21006

BOLT TORQUE

TORQUE DATA FOR STANDARD NUTS, BOLTS, AND CAPSCREWS.

Tighten all bolts to torques specified in chart unless otherwise noted. Check tightness of bolts periodically, using bolt chart as guide. Replace hardware with same grade bolt.

NOTE: Unless otherwise specified, high-strength Grade 5 hex bolts are used throughout assembly of equipment.



Torque Specifications

Bolt Torque for Standard bolts *

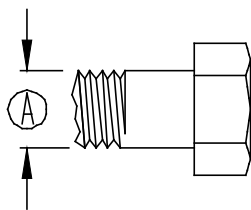
"A"	GRADE 2		GRADE 5		GRADE 8	
	lb-ft	(N.m)	lb-ft	(N.m)	lb-ft	(N.m)
1/4"	6	(8)	9	(12)	12	(16)
5/16"	10	(13)	18	(25)	25	(35)
3/8"	20	(27)	30	(40)	45	(60)
7/16"	30	(40)	50	(70)	80	(110)
1/2"	45	(60)	75	(100)	115	(155)
9/16"	70	(95)	115	(155)	165	(220)
5/8"	95	(130)	150	(200)	225	(300)
3/4"	165	(225)	290	(390)	400	(540)
7/8"	170	(230)	420	(570)	650	(880)
1"	225	(300)	630	(850)	970	(1310)

Bolt Torque for Metric bolts *

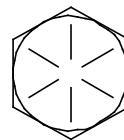
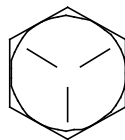
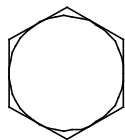
"A"	CLASS 8.8		CLASS 9.8		CLASS 10.9	
	lb-ft	(N.m)	lb-ft	(N.m)	lb-ft	(N.m)
6	9	(13)	10	(14)	13	(17)
7	15	(21)	18	(24)	21	(29)
8	23	(31)	25	(34)	31	(42)
10	45	(61)	50	(68)	61	(83)
12	78	(106)	88	(118)	106	(144)
14	125	(169)	140	(189)	170	(230)
16	194	(263)	216	(293)	263	(357)
18	268	(363)	--	--	364	(493)
20	378	(513)	--	--	515	(689)
22	516	(699)	--	--	702	(952)
24	654	(886)	--	--	890	(1206)

Torque figures indicated are valid for non-greased or non-oiled threads and heads unless otherwise specified. Therefore, do not grease or oil bolts or capscrews unless otherwise specified in this manual. When using locking elements, increase torque values by 5%.

* GRADE or CLASS value for bolts and capscrews are identified by their head markings.



GRADE-2 GRADE-5 GRADE-8



CLASS 8.8

CLASS 9.8

CLASS 10.9





Warranty Registration

4010 320th Street • Box 189 • Boyden, Iowa 51234
Toll Free 800-54DEMCO (800-543-3626) • FAX 800-845-6420
www.demco-products.com

Ag	<input type="radio"/>
RV	<input type="radio"/>
Rental	<input type="radio"/>
Brakes	<input type="radio"/>
Marine	<input type="radio"/>

	Very Satisfied	Satisfied	Dissatisfied	Very Dissatisfied
How satisfied are you with our product?	<input type="radio"/>	<input type="radio"/>	<input type="radio"/>	<input type="radio"/>
How satisfied are you with the dealership/distributor sales staff? Dealer/Distributor Name _____ City _____ State _____	<input type="radio"/>	<input type="radio"/>	<input type="radio"/>	<input type="radio"/>
How satisfied are you with the company sales staff?	<input type="radio"/>	<input type="radio"/>	<input type="radio"/>	<input type="radio"/>
How satisfied are you with the delivery?	<input type="radio"/>	<input type="radio"/>	<input type="radio"/>	<input type="radio"/>
Did you have any contact with a Demco Representative? If YES , how satisfied were you?	YES <input type="radio"/>	NO <input type="radio"/>	<input type="radio"/>	<input type="radio"/>
I would recommend this product to my family and friends.	YES	NO		
Would you purchase again from DEMCO?	YES	NO		
Since taking delivery, have you been contacted by the dealer?	YES	NO		
Did you have any problems with this DEMCO product? If YES , are you satisfied with the company's resolution of your problem?	YES <input type="radio"/>	NO <input type="radio"/>	<input type="radio"/>	<input type="radio"/>

Please list the specific source of information prompting this purchase.

After purchasing this product, do you see any needed product improvement? _____ If yes, what improvement? _____

What other products would you like to see DEMCO offer? _____

Comments _____

Owner's Name: _____ Mailing Address: _____

City: _____ State: _____ Zip Code: _____

Model#: _____

Serial #: _____

Purchase Date: _____

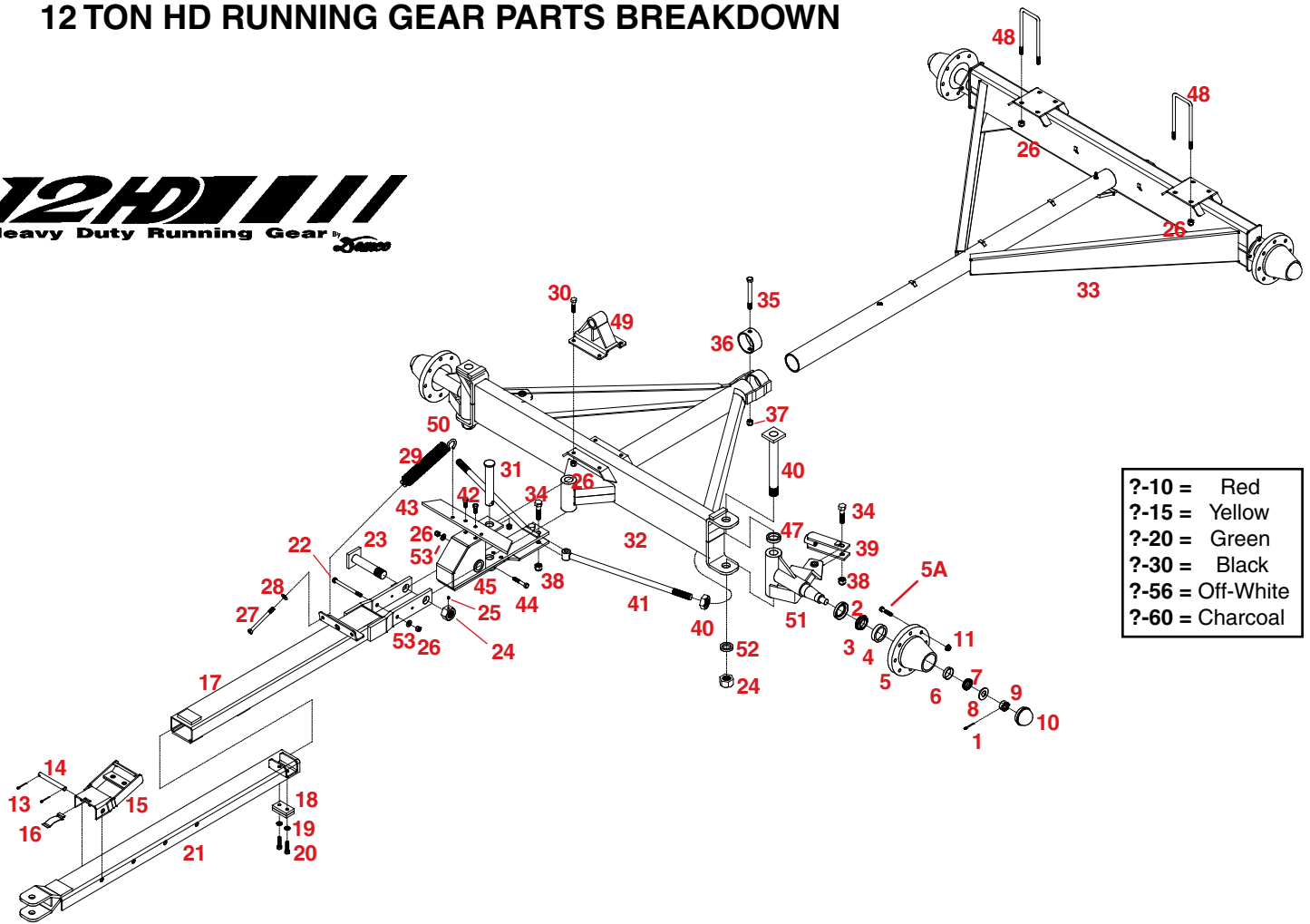
Owner's Signature: _____

Please return to DEMCO By FAX or tri-folding this form to the backside, it is pre-addressed.

Postage

*Demco
4010 320th Street, Box 189
Boyden, Iowa 51234*

12 TON HD RUNNING GEAR PARTS BREAKDOWN



?-10 = Red
 ?-15 = Yellow
 ?-20 = Green
 ?-30 = Black
 ?-56 = Off-White
 ?-60 = Charcoal

REF. NO.	PART NO.	QTY. REQD.	DESCRIPTION
	5503-30	4	Wheel Hub Assembly
*1.	00116	1	5/32" x 1-1/2" IG Cotter Pin (not incl'd)
2.	01944	1	Oil Seal (CR27362)
3.	01942	1	Inner Cone Bearing (JLM506849)
4.	01943	1	Inner Cup (JLM506810)
5.	09034	1	Hub (Stud Bolts Inc'd)
*5a.	09269	-	5/8" Stud Bolt (Replacement only)
6.	01938	1	Outer Cup (LM501310)
7.	01937	1	Outer Cone Bearing (LM501349)
*8.	01936	1	1-1/16" Flatwasher (not incl'd)
*9.	07353	1	Castle Nut (not incl'd)
10.	01933	1	Dust Cap
11.	09240	-	5/8" UNF Beveled Wheel Nut

***Items are not included with Hub Assembly**

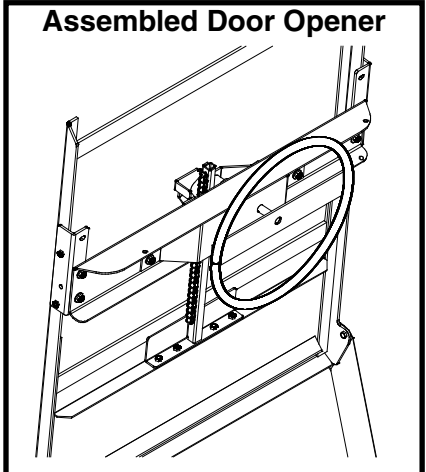
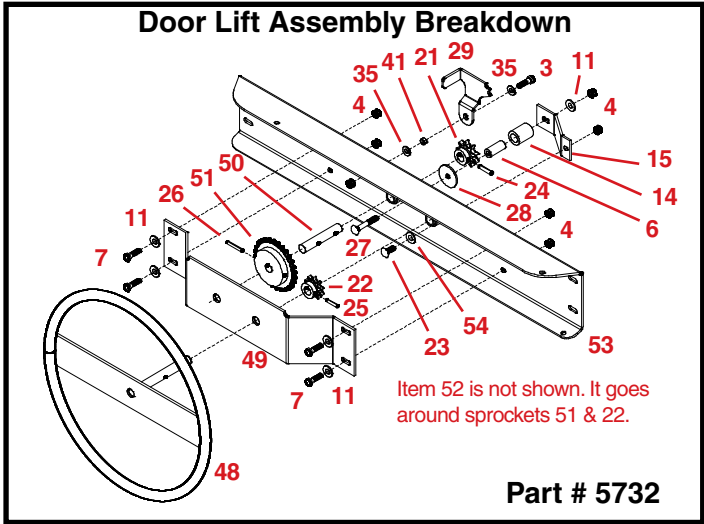
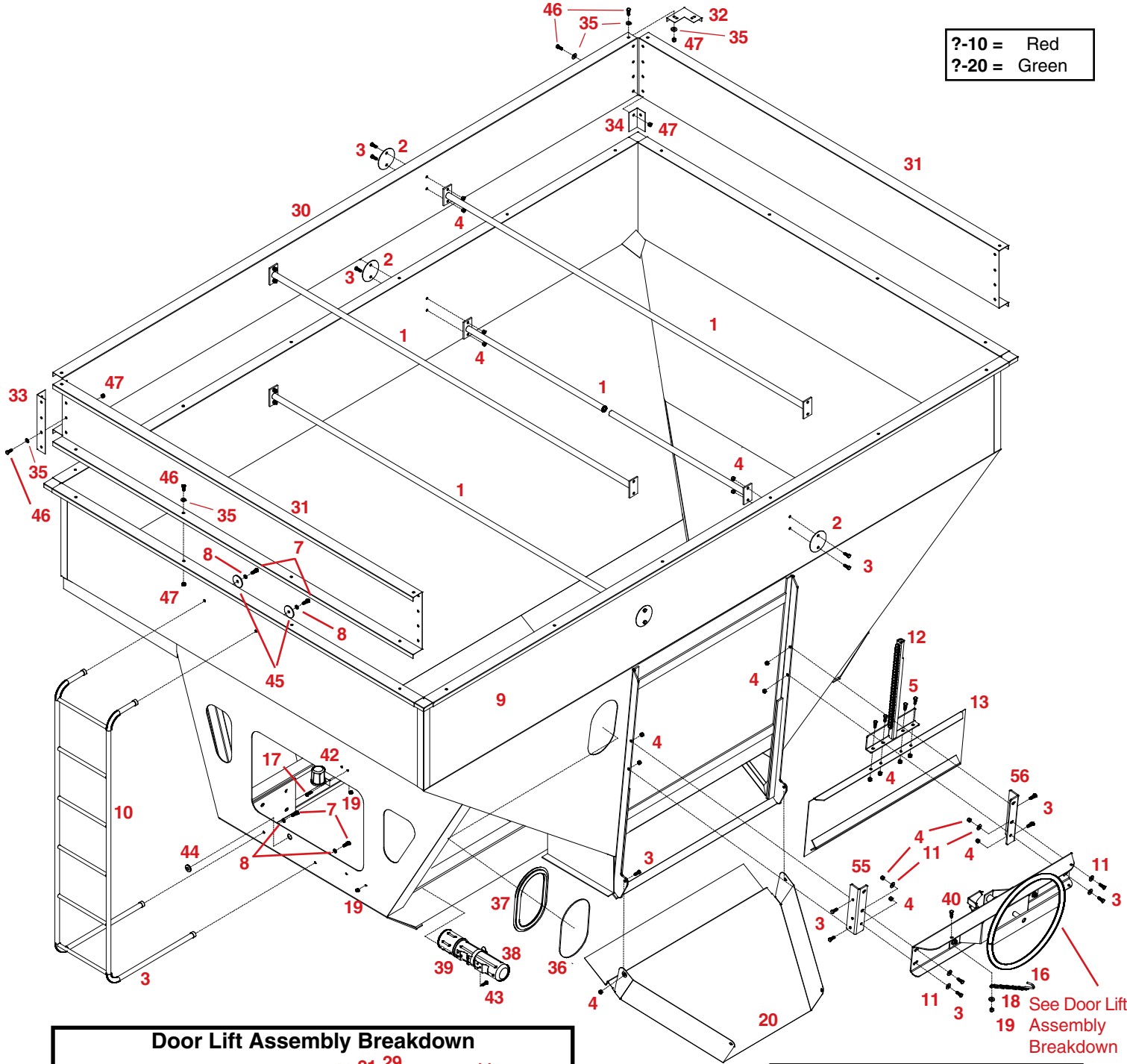
13.	07876	2	1/8" x 1-1/4" Cotter Pin
14.	01159-95	1	Hitch Lock Pin
15.	01157-30	1	Tongue Lock Clip
16.	01158-95	1	Tongue Lock Spring
17.	01925-30	1	Sliding Tongue Extension
18.	01160-30	1	Male Tongue Stop Plate
19.	00084	2	1/2" Lock Washer
20.	01253	2	1/2" -13 UNC x 2" Bolt, Gr. 5
21.	01926-30	1	Adjustable Tongue
22.	04916	1	1/2" -13 UNC x 6-1/2" Bolt, Gr.5
23.	01924-30	1	Tongue Pull Bolt
24.	01922	1	Special 1-1/2" -12UNC Nut
25.	01923	1	1/4" x 1/4" Socket Set Screw
26.	00083	12	1/2" -13 UNC Nut
27.	00545	2	1/2v -13 UNC x 6v Full Thread Bolt
28.	00085	2	1/2" Flat Washers

29.	00306-30	2	Spring w/ Nut Insert
-	04094	-	Spring ONLY
30.	01254	8	1/2" -13 UNC x 1-1/2" Bolt, Gr. 5
31.	01127-30	1	Pivot Pin
32.	07953-30	1	Front Bolster Frame
33.	10599-30	1	Rear Bolster Frame (not for brakes)
-	10643-30	-	Rear Bolster Frame (for brakes)
-	07965	-	Rear Spindle ONLY
34.	01335	4	3/4" -10UNC x 3-1/2" Bolt, Gr.5
35.	01336	2	5/8" -11UNC x 5" Bolt, Gr. 5
36.	01135-30	1	4" Collar
37.	02587	2	5/8" -11UNC Nylon Lock Nut
38.	02961	2	3/4" -10UNC Nylon Lock Nut
39.	01125-30	2	Tie-Rod Clevis
40.	01337	2	1" -14 UNF Hex Nut
41.	05345-30	2	Tie Rod
42.	00967	2	1/2" -13UNC x 1-1/4" Bolt, Gr. 5
43.	05347-30	1	31" Steer Arm Stop
44.	04073	1	1/2" -13 UNC x 3" Bolt, Gr. 5
45.	01927-30	1	Pivot Arm
46.	01947-30	2	1-1/2" x 12-1/2" Pivot Pin
47.	02046	2	Thrust Bearing (83T96)
48.	01567	2	1/2" -13UNC x 3-1/2 x 9-1/2" Sq. U-bolt
49.	07957-30	1	Rocking Bolster Mounting Bracket
50.	07956-30	1	Right Front Spindle
51.	07955-30	1	Left Front Spindle
-	07964	-	Front Spindle ONLY
52.	09510	2	Spindle Spacer
53.	00084	12	1/2" Spring Lock Washers

**Please order replacement parts by
 PART NO., DESCRIPTION and COLOR.**

GRAVITY FLOW BOX PARTS BREAKDOWN

?-10 = Red
?-20 = Green



GRAVITY FLOW BOX PARTS LIST AND ASSEMBLY INSTRUCTIONS

REF. NO.	PART NO.	QTY. REQD.	DESCRIPTION
GF250 Standard 250 Bushel Gravity Box			
1.	01300-30	2	Side Brace Bar
2.	01106-30	4	Extension and Box Washer
3.	00523	18	3/8"-16UNC x 1-1/4" Hex Head Bolt
4.	02592	22	3/8"-16UNC Nylon Insert Locknut
5.	12568	4	Bolt .38 x .500 Socket HD Shoulder Plain
7.	00907	4	3/8"-16UNC x 1" Hex Head Bolt
8.	00060	4	3/8" Lockwasher
9.	07757-?	1	Gravity Flow Box
10.	10212-30	1	Ladder
11.	00059	6	3/8" Flatwasher
12.	11748-30	1	Door Lift Channel
13.	03509-?	1	Unloading Door
16.	02022	1	Transport Chain w/hook
17.	01076	2	1/4"-20UNC x 3/4" Hex Head Bolt
18.	00214	1	1/4" Flatwasher
19.	02772	5	1/4"-20UNC Nylon Insert Locknut
20.	10641-30	1	Chute
36.	07276	1	Window
37.	07310	1	Rubber Window Seal (33-1/2" Long)
38.	10241	1	Operators Manual Cannister
39.	10242	1	Cannister Bracket
40.	04055	1	1/4"-20 UNC x 1" Hex Head Bolt
42.	10277	1	Electrical Plug Holder
43.	00092	2	1/4"-20 UNC x 1/2" Hex Head Bolt
44.	04396	1	1" Rubber Grommet
45.	10231-95	2	Ladder Washer
55.	11572-30	1	Left Door Opener Mount Bracket
56.	11573-30	1	Right Door Opener Mount Bracket

9440011		Gravity Box 115 Bushel Extension	
1.	01300-30	2	Side Brace Bar
2.	01106-30	4	Extension and Box Washer
3.	00523	8	3/8"-16UNC x 1-1/4" Hex Head Bolt
4.	02592	8	3/8"-16UNC Nylon Insert Locknut
30.	05351-30	2	Side Extension
31.	05350-30	2	Front and Back Extension
32.	01105-30	4	Corner Filler Cap
33.	05352-30	4	Outside Corner
34.	01104-30	4	Inside Corner
35.	00004	68	5/16" Flatwasher
46.	01263	62	5/16"-18UNC x 3/4" Hex Head Bolt
47.	02802	62	5/16"-18UNC Nylon Insert Locknut

5732		Door Lift Assembly	
3.	00523	1	3/8"-16UNC x 1 1/4" Hex Head Bolt Gr.5
4.	02592	6	3/8"-16UNC Nylon Insert Locknut
5.	00179	1	3/8"-16UNC Center-punch Locknut
6.	01114	1	3/4" OD x 3/8" ID Bushing
7.	00907	4	3/8"-16UNC x 1" Hex Head Bolt Gr. 5
11.	00059	5	3/8" Flatwasher
14.	01115-95	1	1-1/4" O.D. x 3/4" I.D. Bushing (plated)
15.	01243-30	1	Roller Brace Bracket (black)
21.	01332	1	9 Tooth Sprocket (#50 chain)
22.	02028	1	10 Tooth Sprocket (#40 chain)
23.	02467	1	3/8"-16UNC x 1" Carriage Bolt
24.	02849	1	5/16" x 1 3/8" Roll Pin
25.	03096	1	1/4" x 1 1/4" Roll Pin
26.	05734	1	1/4" x 1 3/4" Roll Pin
27.	08109	1	3/8"-16UNC X 2 1/2" Carriage Bolt
28.	09552-95	1	2" OD Washer (plated)
29.	11412-30	1	Door Latch (black)
35.	00004	2	5/16" Flatwasher
41.	11414	1	Door Latch Pivot Bushing
48.	11455-30	1	Door Opener Wheel (black)
49.	11459-30	1	Backplate (black)
50.	11461	1	Sprocket Shaft
51.	11462	1	28 Tooth Sprocket (#40 chain)
52.	11463	1	Roller Chain, #40 x 37 Links w/ connect link
53.	11569-30	1	Opener Channel (black)
54.	02384	1	1/2" NR Machine Washer 14 ga

INSTALLING THE BOX, DOOR LIFT CHANNEL, DOOR LIFT WHEEL ASSEMBLY AND TRANSPORT CHAIN

- Bolt lift channel (#12) to door (#13) using four 3/8" x 1 1/4" bolts (#3) and four 3/8" nylon locknuts (#4). Make sure the roller chain is on your left side when facing the unloading door.
- Door opener mount brackets (#55 & #56) to holes in the door frame using four 3/8" x 1 1/4" bolts (#3) and four 3/8" nylon locknuts (#4). (See drawing for proper orientation)
- Slide the door lift wheel mount (Sub. Assembly #5732) over the door lift channel (#12) and bolt it to the door opener mount brackets (#55 & #56) using four 3/8" x 1-1/4" bolts (#3), four 3/8" flatwashers (#11), and four 3/8" nylon locknuts (#4).
- IMPORTANT** Tighten all mounting bolts just enough to limit movement. Adjust by raising and lowering the door, then tighten bolts accordingly to prevent the door from binding.
- Bolt the transport chain (#16) to the angle on the door lift wheel mount (#53) using one 1/4" x 3/4" bolt (#17), one 1/4" flatwasher (#18), and one 1/4" nylon locknut (#19).
Note: Roller Bushing (#14) and Roller Brace Bracket (#15) are adjustable so that slack between the roller chain on (#12) and the sprocket (#21) can be kept to a minimum.

MOUNTING THE SIDE BRACES, EXTENSIONS & LADDER

- Mount the Front, Back, and Side Extensions (#30 & #31) loosely to the box using twenty 5/16" x 3/4" bolts (#46), twenty 5/16" flatwashers (#35), and twenty 5/16" nylon locknuts (#47).
- The ladder (#10) can be placed on the front or back of the gravity flow box using two 3/8" x 1" bolts (#7), two 3/8" lockwashers (#8), and two plated ladder washers (#45) on the top of the ladder as shown. Bolt the bottom of the ladder to the frame of the box using two 3/8" x 1" bolts (#3) and two 3/8" lockwashers (#8).
- Mount the Outside Corner (#33) to the outside of the extensions using 5/16" x 3/4" bolts (#46) and 5/16" nylon locknuts (#47). The bottom two bolts must also hold the Inside Corner (#34) on the inside of the box as shown.
- Mount the Corner Filler Cap (#32) under the lip on the outside of the extensions using two 5/16" x 3/4" bolts (#46), 5/16" flatwashers (#35) and two 5/16" nylon locknuts (#47).
- Mount the inside Side Braces (#1) to the box (#9) and side extensions (#30) with back up washers (#2) on the outside as shown using four 3/8" x 1 1/4" bolts (#3) and four 3/8" nylon locknuts (#4).
NOW TIGHTEN ALL BOLTS.

INSTALLING THE DELIVERY CHUTE

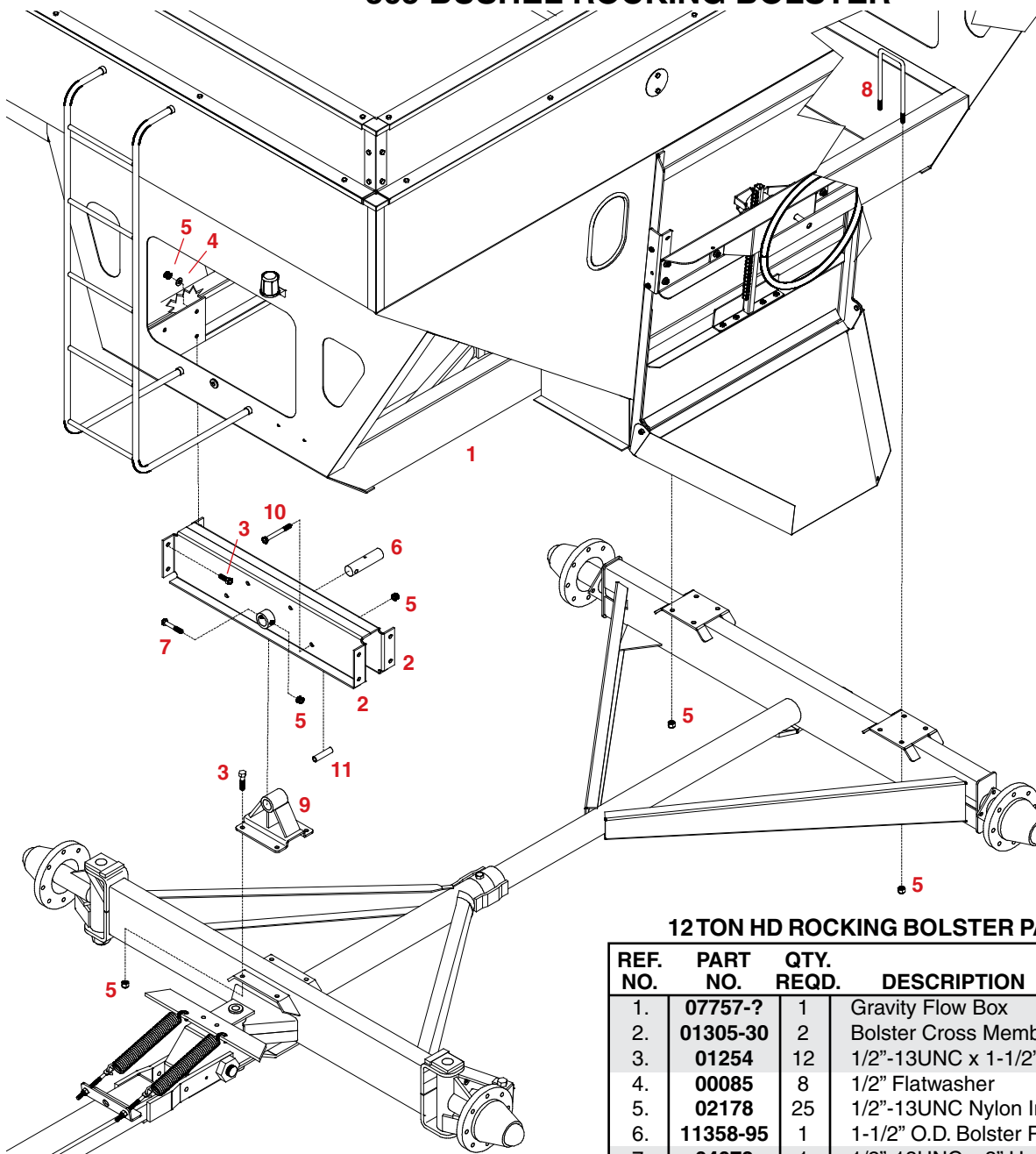
- Mount the Chute (#20) to the gravity flow box using two 3/8" x 1-1/4" bolts (#3) and two 3/8" nylon locknuts (#4). When tightening make sure the chute moves up and down freely.
Note: Check all bolts and nuts to ensure proper tension or torque.

BOX DECAL PARTS LIST

RED BOX (charcoal)	GREEN BOX (yellow)	QTY. REQD.	DESCRIPTION
AG21081	AG21075	2	Medium Swoosh
AG21097	AG21096	2	Small Swoosh
AG21094	AG21093	2	"365" Number
AG21035	AG21036	-	"325" Number
AG21079	AG21073	2	Large Demco Logo
AG21080	AG21074	2	Medium Demco Logo
AG21083	AG21077	1	Posi-Flow

Please order replacement parts by PART NO., DESCRIPTION and COLOR

365 BUSHEL ROCKING BOLSTER



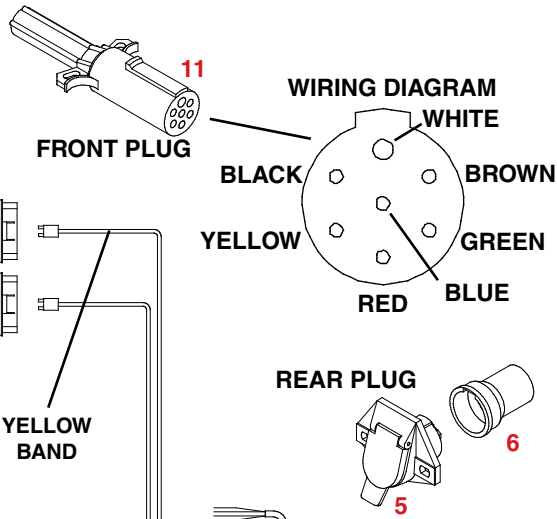
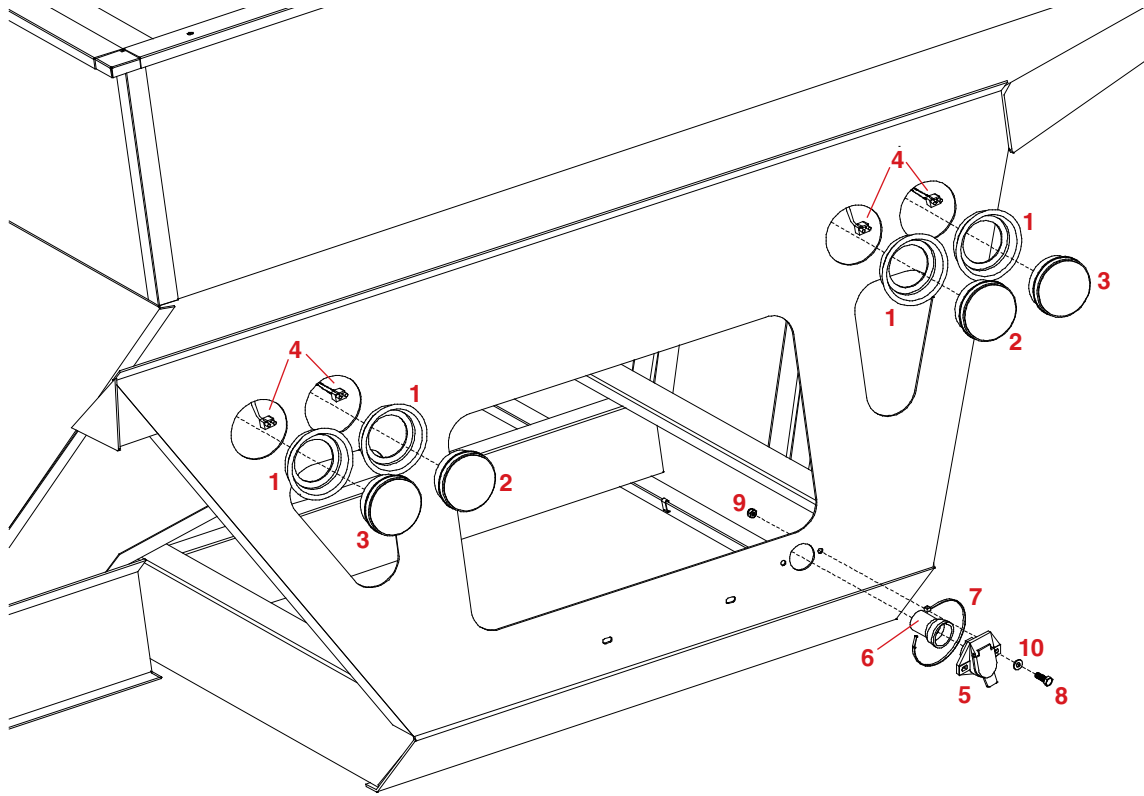
12TON HD ROCKING BOLSTER PARTS LIST

REF. NO.	PART NO.	QTY. REQD.	DESCRIPTION
1.	07757-?	1	Gravity Flow Box
2.	01305-30	2	Bolster Cross Member
3.	01254	12	1/2"-13UNC x 1-1/2" Hex Head Bolt
4.	00085	8	1/2" Flatwasher
5.	02178	25	1/2"-13UNC Nylon Insert Locknut
6.	11358-95	1	1-1/2" O.D. Bolster Pin (plated)
7.	04073	1	1/2"-13UNC x 3" Hex Head Bolt
8.	01567	4	Square U-Bolt
9.	07957-30	1	Center Fulcrum
10.	01338	4	1/2"-13UNC x 4-1/2" Hex Head Bolt
11.	10691-95	4	Bushing

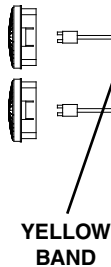
1. Begin by assembling the Center Fulcrum (#9) to the Bolster Cross Member (#2) using 1-1/2" Bolster Pin (#6), coming through from the back as shown. Secure the pin in place using one 1/2" x 3" bolt (#7) and one 1/2" nylon locknut (#5) through the collar on the bolster cross member. Insert Bushing (#11) into bolster crossmember and align holes. Bolt with 1/2" x 4-1/2" bolt (#10) and 1/2" lock nut (#5).
2. Mount the Bolster Cross Member (#2) and Center Fulcrum (#9) to the side plates on the gravity box frame using eight 1/2" x 1-1/2" bolts (#3), eight 1/2" flatwashers (#4), and eight 1/2" nylon locknuts (#5). **DO NOT TIGHTEN** these eight bolts.
3. Slowly set the box down onto running gear aligning the center fulcrum holes with holes in front axle of the running gear. Secure using four 1/2" x 1-1/2" bolts (#3) and four 1/2" nylon locknuts (#5). Secure rear of gravity flow box using two 1/2" Square U-Bolts (#8) and four 1/2" nylon locknuts (#5).

4. **NOW TIGHTEN ALL BOLTS.**

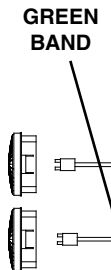
GRAVITY FLOW LIGHT KIT



AMBER
TURN/FLASHER
RED
MARKER



RED
MARKER
AMBER
TURN/FLASHER



LIGHT KIT PARTS LIST

REF. NO.	PART NO.	QTY. REQD.	DESCRIPTION
1.	05447	4	Light Mounting Grommet
2.	05446	2	4" Red Light
3.	05260	2	4" Amber Light
4.	03294	1	Light Wire Harness
5.	07417	1	7 Pin Female Plug Receptacle
6.	07418	1	Female Plug Wire Cover
7.	NHT11	1	Nylon Hose Tie
8.	04055	2	1/4"-20 UNC x 1" Hex Head Bolt
9.	02772	2	1/4"-20 UNC Nylon Insert Locknut
10.	00214	2	1/4" Flatwasher
11.	07416	1	Male Plug

Please order replacement parts by **PART NO.**, **DESCRIPTION** and **COLOR**.

INSTALLING THE LIGHT KIT

1. Begin by inserting a Light Mounting Grommet (#1) into each mounting hole. Press Red Light (#2) and Amber Light (#3) until they are securely mounted in the grommets.
2. Proceed wiring the lights as shown in the drawing and the wiring schematic. Secure the Wiring Harness (#4) to the gravity flow box frame using the Small Body Clips. Front of wagon has a 1" hole which wiring harness passes through. Use 1" rubber grommet #04396 to protect wiring.
3. When connecting the wire harness (#4) to the front (male tractor) plug (#11) follow the wire schematic as follows: Brown wire to the Red braking marker lights, Yellow wire to the left turning marker light, Green wire to the right turning marker light, and White wire to the ground.
4. When connecting the wire harness (#4) to the rear box plug (#5) match the wire colors with the colors on the rear box plug (#5).

WINDOW INSTALLATION

INSTALLATION PROCEDURE

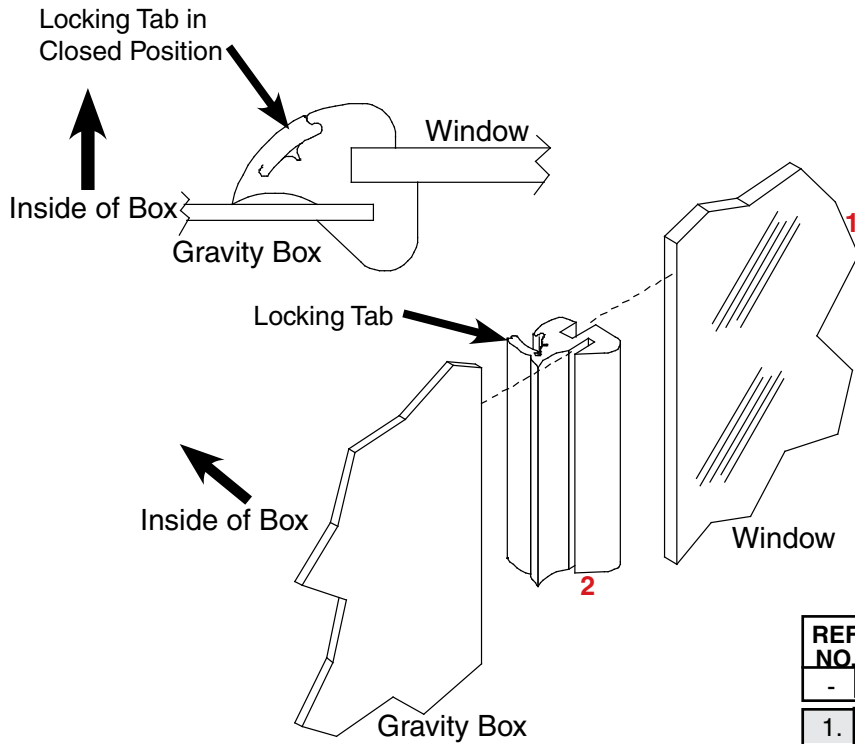
The installation must be done from inside the box.

1. Place rubber molding in opening. Seam should begin on side of opening.
2. Remove the protective sheeting from both sides of the plastic window.
3. Slide window into groove in molding. Use a flat blade screwdriver to get molding seated correctly. Using soapy water will aid in installation
4. Using the flat blade screwdriver, press in the locking tab.

WINDOW PARTS LIST

REF. NO.	PART NO.	QTY. REQD.	DESCRIPTION
-	5468	1	Window Kit
1.	07276	1	Window
2.	07310	1	Rubber Seal (33-1/2" long)

Please order replacement parts by
PART NO. and DESCRIPTION.





P.O. BOX 189
4010 320th St., BOYDEN, IA. 51234
PH: (712) 725-2311
FAX: (712) 725-2380
TOLL FREE: 1-800-54DEMCO (1-800-543-3626)
<http://www.demco-products.com>